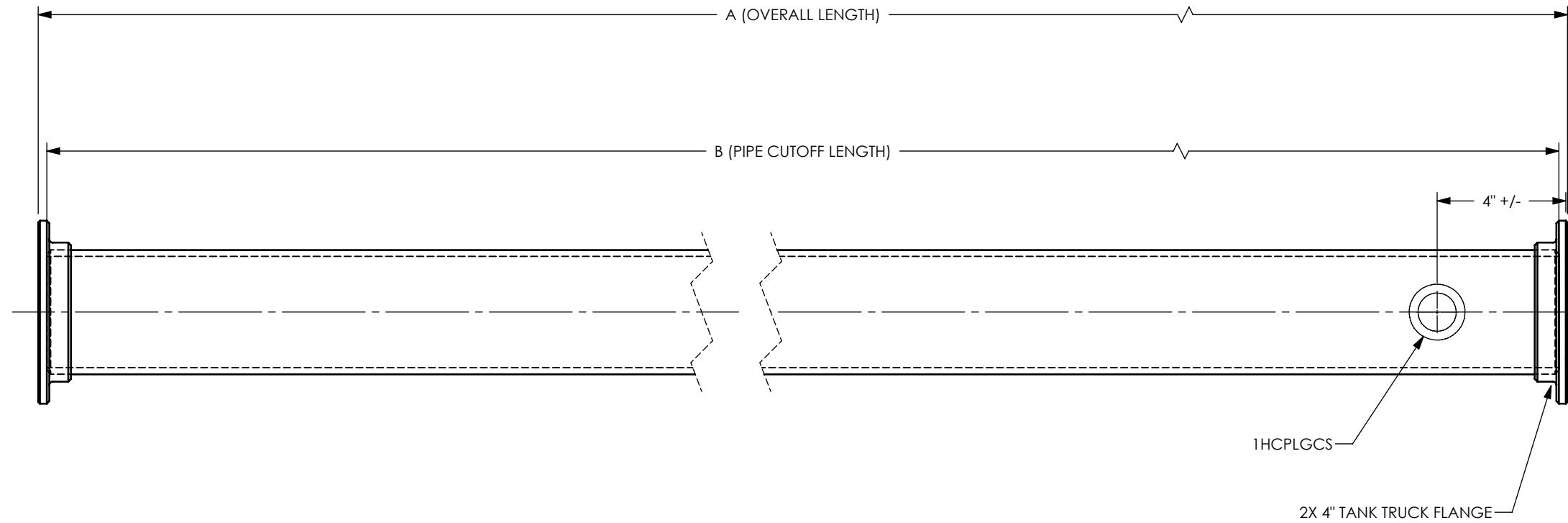

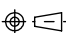


REVISIONS				
REV.	ZONE	DESCRIPTION	DATE	BY



(EXAMPLE) 4LCS-TFXTF-78X	78"	77-3/8"
4LCS-TFXTF-XXX	XX"	EQUALS O.A.L. MINUS 5/8"
PART NUMBER	OVERALL LENGTH "A"	PIPE CUTOFF LENGTH "B"

FOR QUOTATION ONLY
NOT FOR PRODUCTION

PROPRIETARY AND CONFIDENTIAL							
This drawing is owned by Dixon Valve & Coupling Co. and shall be returned upon demand. It is loaned on condition that it shall not be copied or reproduced or submitted to others without the owners consent. In accepting it subject to this condition the recipient further agrees that this drawing or any design detail or concept disclosed herein shall not be used in any way detrimental to or in competition with the owner. If the recipient does not agree to the terms of this agreement they shall return this drawing immediately. The information contained in this drawing is subject to change without notice.							
WEIGHT lbs: (kg):	DIMENSIONS GIVEN ARE	INCHES [METRIC]	INITIALS	DATE	DIXON U.S.A.  THE RIGHT CONNECTION™		
PROCESS	TOLERANCES <i>UNLESS NOTED</i> .XX ± .015 [.38]		DRAWN BY	NWM			
SURFACE COATING	.XXX ± .005 [.127]		DRFT CHK			TITLE	
	ANGULAR ± 1°		ENG CHK			4" SCHEDULE 40 PIPE WITH TANK TRUCK FLANGES	
S.M.O.D.	FINISH $\sqrt{125}$		MFG CHK			MATERIAL	
E.R.#	SCALE: 1:5		APPROVAL			CARBON STEEL, ALUMINUM OR STAINLESS	
			SHEET	1 of 2	3RD ANGLE	SIZE	4LCS-TFXTF-78
			DRAWING #			B	

8 7 6 5 4 3 2 1

8 7 6 5 4 3 2 1

D

D

C

C

B

B

A

A