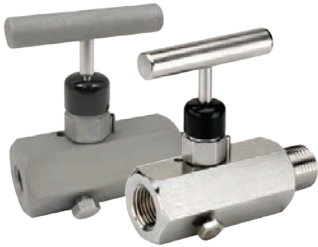


**NEW**

## Block and Bleed Needle Valves

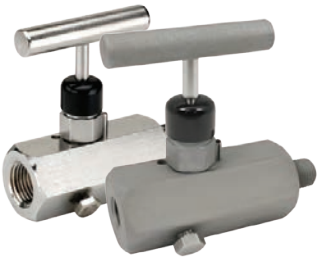
**Features:**

- allows pressure to be bled off without disturbing the permanent piping installation allowing quick and easy removal or replacement of instruments
- FKM O-ring seal and PTFE back-up ring below the threads protects from corrosion and galling
- stem threads are rolled for strength and ease of operation
- metal-to-metal hard seat design is 100% helium leak tested to 1 x 10<sup>-4</sup> ml/s at 200 PSI
- orifice size is 0.187", flow coefficient: 0.44
- all stems are 316 stainless steel
- 0.090" bleed hole located on bottom is controlled by a ¼"-20 UNF-2A bleed screw



### Hard Seat Male to Female

NPT Size	Handle Style	PSI at 200°F	Material	Part #	Price/E
¼" - 18	T design	10000	<i>zinc nickel plated steel</i>	<b>MFC602</b>	<b>\$122.00</b>
½" - 14	T design	10000	<i>zinc nickel plated steel</i>	<b>MFC604</b>	<b>132.00</b>
¼" - 18	T design	10000	<i>316 stainless steel</i>	<b>MFS602</b>	<b>274.00</b>
½" - 14	T design	10000	<i>316 stainless steel</i>	<b>MFS604</b>	<b>300.00</b>



### Soft Seat Male to Female

NPT Size	Handle Style	PSI at 200°F	Material	Part #	Price/E
¼" - 18	T design	6000	<i>zinc nickel plated steel</i>	<b>MFC702</b>	<b>\$125.00</b>
½" - 14	T design	6000	<i>zinc nickel plated steel</i>	<b>MFC704</b>	<b>134.00</b>
¼" - 18	T design	6000	<i>316 stainless steel</i>	<b>MFS702</b>	<b>276.00</b>
½" - 14	T design	6000	<i>316 stainless steel</i>	<b>MFS704</b>	<b>301.00</b>

L

**NEW**

## Bleed Needle Valves

**Features:**

- provides a convenient means to relieve process pressures trapped between a shut-off valve and the instrument
- FKM O-ring seal and PTFE back-up ring below the threads protects from corrosion and galling
- stem threads are rolled for strength and ease of operation
- metal-to-metal hard seat design is 100% helium leak tested to 1 x 10<sup>-4</sup> ml/s at 200 PSI
- non-rotating soft tip stem and a backup metal-to-metal seal
- all stems are 316 stainless steel
- 0.159" bleed port



### Hard Seat Male

NPT Size	Handle Style	PSI at 200°F	Material	Part #	Price/E
¼" - 18	T design	6000	<i>brass</i>	<b>MB802</b>	<b>\$128.00</b>
½" - 14	T design	6000	<i>brass</i>	<b>MB804</b>	<b>138.00</b>
¼" - 18	T design	10000	<i>zinc nickel plated steel</i>	<b>MC802</b>	<b>101.00</b>
½" - 14	T design	10000	<i>zinc nickel plated steel</i>	<b>MC804</b>	<b>115.00</b>
¼" - 18	T design	10000	<i>316 stainless steel</i>	<b>MS802</b>	<b>128.00</b>
½" - 14	T design	10000	<i>316 stainless steel</i>	<b>MS804</b>	<b>136.00</b>



### Soft Tip Male

NPT Size	Handle Style	PSI at 200°F	Material	Part #	Price/E
¼" - 27	T design	6000	<i>brass</i>	<b>MB852</b>	<b>\$128.00</b>
½" - 18	T design	6000	<i>brass</i>	<b>MB854</b>	<b>138.00</b>
¼" - 18	T design	6000	<i>zinc nickel plated steel</i>	<b>MC852</b>	<b>101.00</b>
½" - 14	T design	6000	<i>zinc nickel plated steel</i>	<b>MC854</b>	<b>115.00</b>
¼" - 18	T design	6000	<i>316 stainless steel</i>	<b>MS852</b>	<b>128.00</b>
½" - 14	T design	6000	<i>316 stainless steel</i>	<b>MS854</b>	<b>136.00</b>