

Straub Open-Flex 1L Couplings

Application

- Suitable for repairing or joining pipes where access to the pipe end is difficult or impossible

Features

- Wrap-around design differs from similar type repair products because the installation or repair is permanent due to the unique flexible lip seal gasket design
- Joins like or dissimilar pipe materials: steel, galvanized, painted, stainless steel, thin-wall stainless steel, PVC, copper
- Requires no special tools or pipe-end preparation; only a torque wrench is required for a secure and safe pipe connection that seldom needs retightening
- Accommodates up to 5° of pipe misalignment
- Vary gap between pipe ends
- Absorbs vibration, water hammer, and sound
- Acts as an expansion joint; will accept up to .25" of axial movement
- 5-year limited warranty
- Reusable



Materials

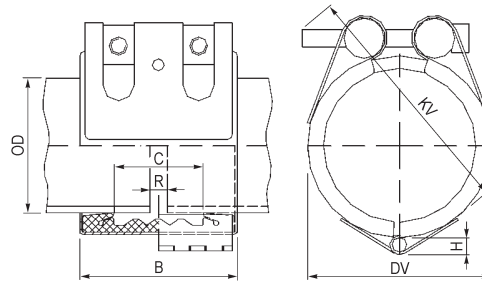
- Casing: AISI 316Ti; screws: AISI 4135 steel; bolts: AISI 12L 14 galvanized

Specifications

- EPDM sealing sleeve temperature range: - 4°F to 212°F (-20°C to 100°C)
Maximum temperature limit is 212°F (100°C) with EPDM gasket Material. Higher temperature limits may be allowed subject to specific factory approval. For specific chemical recommendations, please contact Dixon®

Approvals

- National Sanitation Foundation (NSF)
- Conforms to ASTM 1476, Type 2, Class 3 specifications



Size	Pipe O.D. Range		Working Pressure PSI	Coupling Dimensions		Assembled Dimensions DV	Maximum Distance Between Pipe End R	316 Ti Stainless Steel Part #
	Actual	Min to Max		B	C			
1-1/2"	1.90"	1.85" to 1.95"	363	3.0"	1.4"	2.8"	.20"	STR35001
2"	2.38"	2.32" to 2.42"	232	3.0"	1.4"	3.2"	.20"	STR35151
2-1/2"	2.88"	2.81" to 2.93"	232	3.0"	1.4"	3.2"	.20"	STR35201
3"	3.50"	3.44" to 3.56"	232	3.7"	2.0"	4.4"	.20"	STR35351
4"	4.50"	4.43" to 4.57"	232	3.7"	2.0"	5.4"	.20"	STR35651
5"	5.50"	5.45" to 5.57"	232	4.2"	2.4"	6.4"	.20"	STR35901
6"	6.63"	6.54" to 6.71"	232	4.2"	2.4"	7.5"	.20"	STR36051

NOTE: Not pull-out resistant. Ensure that pipes are properly anchored and supported.

Assembly Tool



Part #

STR6648