

HS-Series Hydraulic Couplings

Application

- Designed exclusively for steam applications

Feature

- Coupler has a large plated steel sleeve designed for easier gripping with gloves

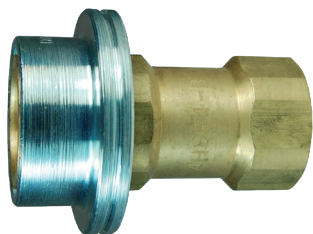
Specifications

- Special high-temp EPDM O-rings designed for steam service providing a temperature range of -70°F to 400°F (-57°C to 204°C)
- Rated to 200 PSI gauge saturated steam 382°F (194°C)

Warning: Do not disconnect under pressure!



ISO-B Steam Interchange Female Threaded Couplers



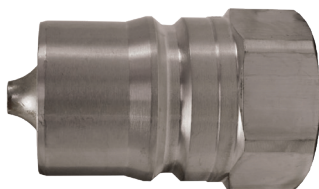
brass



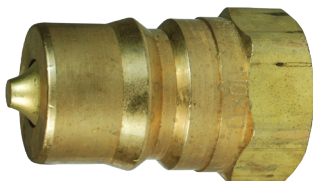
303 stainless

Body Size	Threads	Brass Part #	303 Stainless Steel Part #
1/4"	1/4" - 18 NPTF	2HSF2-B	2HSF2-S
	1/4" - 19 BSPP	2HSBF2-B	2HSBF2-S
3/8"	3/8" - 18 NPTF	3HSF3-B	3HSF3-S
	3/8" - 19 BSPP	3HSBF3-B	3HSBF3-S
1/2"	1/2" - 14 NPTF	4HSF4-B	4HSF4-S
	1/2" - 14 BSPP	4HSBF4-B	4HSBF4-S
3/4"	3/4" - 14 NPTF	6HSF6-B	6HSF6-S
	3/4" - 14 BSPP	6HSBF6-B	6HSBF6-S
1"	1" - 11-1/2 NPTF	8HSF8-B	8HSF8-S
	1" - 11 BSPP	8HSBF8-B	8HSBF8-S
1-1/2"	1-1/2" - 11-1/2 NPTF	PS-12HF12-B	PS-12HF12-S

ISO-B Steam Interchange Female Threaded Plugs



steel



brass



303 stainless

Body Size	Threads	Steel Part #	Brass Part #	303 Stainless Steel Part #
1/4"	1/4" - 18 NPTF	HS2F2	HS2F2-B	HS2F2-S
	1/4" - 19 BSPP	HS2BF2	HS2BF2-B	HS2BF2-S
3/8"	3/8" - 18 NPTF	HS3F3	HS3F3-B	HS3F3-S
	3/8" - 19 BSPP	HS3BF3	HS3BF3-B	HS3BF3-S
1/2"	1/2" - 14 NPTF	HS4F4	HS4F4-B	HS4F4-S
	1/2" - 14 BSPP	HS4BF4	HS4BF4-B	HS4BF4-S
3/4"	3/4" - 14 NPTF	HS6F6	HS6F6-B	HS6F6-S
	3/4" - 14 BSPP	HS6BF6	HS6BF6-B	HS6BF6-S
1"	1" - 11-1/2 NPTF	HS8F8	HS8F8-B	HS8F8-S
	1" - 11 BSPP	HS8BF8	HS8BF8-B	HS8BF8-S
1-1/2"	1-1/2" - 11-1/2 NPTF	PS-H12F12	PS-H12F12-B	PS-H12F12-S