

## Dixon® Gauges

### Application

- All of the gauges supplied by Dixon are designed for long, reliable service under rugged conditions. Typical applications include those on pumps, hydraulic and pneumatic systems, compressors, machine tools, and many other installations where it is necessary to have a gauge with a non-corrosive movement. The gauges available include standard dry and liquid-filled pressure gauges, compound pressure gauges, vacuum gauges, and welding gauges. Materials available include brass, stainless steel, and plastic

**Figure Interval** - Figure Interval (Increments between PSI numbers on gauge face)

**Gradient Interval** - Graduation Interval (Fractional increments between PSI numbers on gauge face)

### ABS Standard Dry Gauges

#### Features

- ASME B40.1, Grade B ( $\pm$  3-2-3% accuracy)
- PowerFlex™ movement with polyester segment, designed to resist the effects of shock, vibration and pulsation

#### Materials

- ABS plastic case, corrosion resistant
- Polycarbonate window
- Black aluminum pointer

#### Specifications

- C-shaped bronze safety bourdon tube (600 PSI and lower)
- Helical wound bronze safety bourdon tube (1000 PSI and higher)
- Ambient temperature range: -40°F to 150°F (-40°C to 66°C)

### Center Back Mounts

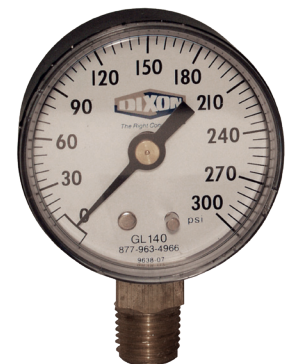
PSI Range	Figure Interval	Minor Gradient	1-1/2" Face 1/8" Center Back Mount Part #	2" Face 1/4" Center Back Mount Part #
0-15	1	.5	---	GC200
0-30	5	.5	GC605	GC215
0-60	5	1	GC610	GC220
0-100	10	2	GC615	GC225
0-160	20	5	GC620	GC230
0-200	20	5	GC625	GC235
0-300	30	5	---	GC240



GC230

### Lower Mounts

PSI Range	Figure Interval	Minor Gradient	2" face, 1/4" lower mount Part #	2-1/2" face 1/4" lower mount Part #	3-1/2" face 1/4" lower mount Part #
0-15	1	.5	GL100	GL300	GS15-4
0-30	5	.5	GL115	GL320	GS30-4
0-60	5	1	GL120	GL325	GS60-4
0-100	10	2	GL125	GL330	GS100-4
0-160	20	5	GL130	GL335	GS160-4
0-200	20	5	GL135	GL340	GS200-4
0-300	30	5	GL140	GL345	GS300-4
0-400	50	10	---	GL347	GS400-4
0-600	50	10	---	GL350	GS600-4
0-1000	200	20	---	GL355	GS1000-4
0-1500	300	50	---	GL360	---
0-2000	400	50	---	GL365	---
0-3000	500	100	---	GL370	---
0-5000	1000	100	---	GL375	---



GL140

